



BAHIA CORINTHIAN YACHT CLUB

Presents the

THE BAHIA CORINTHIAN INVITATIONAL 2016

Predicted Log / Cruiser Navigation Contest

Saturday; June 11th, 2016



Bahia Corinthian Yacht Club Invitational Trophy

History of the SHARKIE and BCYC INVITATIONAL

Predicted Log / Cruiser Navigation Contests

Back in the 1970s, Shark Island Yacht Club was the predominate force in Predicted Log Racing in the Newport Beach area. BCYC indicated interest in participating and the SCCA dispatched a few Skippers from the area to host seminars at their Club and help them develop a cadre of Predicted Log Racing Skippers. In order to help develop these prospective Skippers, BCYC was key in creating the Orange Coast Predicted Log group whose primary focus was on seminars and weekend training races. This effort was successful and produced a number of fine contestants out of BCYC. In the early eighties, the majority of the SCCA Skippers hailed from Shark Island Yacht Club and Del Rey Yacht Club with Shark Island Yacht Club taking the Simonson top club Season Points Trophy regularly. Shark Island Yacht Club sponsored the Shark Island Yacht Club (Invitational?), which was a major Brugman contest and was run a week or two before the Fourth of July. When feeder races were created, the Four Winds Yacht Club created the Sharkie as a feeder to the Shark Island Yacht Club race. At that time we had a log racer named Dave Ritchie who was quite a character. When he won the Sharkie and found that it had no Perpetual Trophy, he immediately went out and bought one. Of course, his name was clearly shown as the first winner, although I believe it had been run once or twice before. Incidentally, that perpetual was later used for the Two Harbors race until recently when the yacht club currently sponsoring that race replaced it.

Things changed at Shark Island Yacht Club; their membership began to dwindle and the club soon closed its doors. I believe that it was at this time that the BCYC offered to replace the Shark Island Yacht Club trophy race with one of their own. The contest was named the BCYC Invitational (although it has always been open to all and therefore is not really an "invitational"). It has been run as the primary Brugman contest and has retained the approximate same date as the Shark Island Yacht Club contest. Typically, by that time of year, the weather off Newport Beach is becoming quite nice and the contest has always been very popular with our Skippers. Further, BCYC has established a reputation for hosting a first class event. SCCA is pleased and proud to have BCYC host this classic and important race.

BAHIA CORINTHIAN INVITATIONAL

Saturday; June 11th, 2016

Predicted Log / Cruiser Navigation Contest

Sponsored by: -----Bahia Corinthian Yacht Club

Sanctioned by: -----SCCA & NACA

Eligibility: -----All eligible members of SCCA Member Yacht Clubs.

Points: ----- SCCA Top-Ten, NACA, Brugman, Bathke, Simonson Club Trophy, Bobrick, Spring Series, and Lurie First Year Trophy.

Trophies: -----BCYC Invitational Cup Perpetual Trophy; keeper trophies for overall and first place First Year.

Race Committee: -----Ken Griffing @ Hm: 626-333-0513 or Cell: 626-483-8460.

Committee boat: -----Loon's Call

Scorer: -----Tom Collins on Misty Sea @ 818-363-6292.

Rules:----- SCCA Contest Rules as amended Feb. 18th 2015.

Skippers' meeting: -----Friday, June 10th, at 1830 in the BCYC card room, 2nd floor. Predicted Log to be turned in at this time. Revised start times will be assigned.

Friday dinner:-----Available in BCYC dining room, bar, or local restaurants.

Observers: -----Skippers will provide their own observers.,

Communications:----- Use VHF Ch. 71 as a working channel.

Postponement:-----Any last minute announcements will be made on Ch. 71.

Observer logs:-----After berthing at BCYC, observers should turn in the Actual Logs within one-half hour to the scorer's boat, Misty Sea, but no later than 1400 hours.

Awards dinner: -----Saturday; June 11th, at BCYC. No host cocktails at 1830; dinner at 1930; awards following dinner. Pay at the door; reservations mandatory.

BAHIA CORINTHIAN INVITATIONAL 2016

This course has been designed to give new contestants the 'Easy Entry' procedure wherein they can simply enter and navigate the course. Their speeds and times will be figured for them by the Committee. The entire course should have the vessels passing each other port-to-port while providing adequate separation but still having the camaraderie of seeing the other contestants during the regatta.

The Course

Start:	RW "NWP" Mo (A), Newport Entrance Buoy	50 yards port
WP-1:	Balboa Pier M.M. MARKERs as a range	400 to 500 yards stbd
CP-1:	Newport Pier, as a range	200 to 300 yards stbd
CP-2:	Buoy R N Priv, abeam north stack of H.B. powerplant	25 yards stbd
CP-3:	Huntington Beach Pier light, Fl 4s 32ft Priv	300 to 350 yards stbd
CP-4:	Buoy R N Priv, abeam north stack of H.B. powerplant	50-75 yards port
CP-5:	Newport Pier, as a range	400 to 500 yards port
CP-6:	Balboa Pier M.M. MARKERs as a range	600 to 700 yards port
Finish:	RW "NWP" Mo (A), Newport Entrance Buoy	50 yards port

SPECIAL RULES

1. Predict a finish time of 1200. Start times will be adjusted at the skippers' meeting to provide a theoretical three-minute separation at the finish.
2. All equipment aboard the vessel may be used except that which is prohibited.
Use of the following data from any source is prohibited: Clock time or elapsed time
3. This is an Open Log regatta. During the regatta the skipper may have access to all times recorded on the Actual Log. Skipper is to call and Observer is to record WP-1 time on the back of the Actual Log.
4. Official distance is 15.5 nm.
5. Charts: Use chart 18746, 39th Ed. and 18754, 20th Ed

2016 BCYC Invitational Easy-Entry

A special feature of this year's Bahia Corinthian Yacht Club Invitational predicted log regatta is the provision for Easy-Entry level contestants to enter without the need to run a measured mile in advance or to prepare and submit a predicted log. The course is just fifteen miles and it's all in the vicinity of the Newport Beach area. You can even use your GPS with speed!

It's simple! All you need to do is attend the BCYC skippers' meeting at 6:30 Friday night, June 10. They'll answer any questions you might have, provide an observer if you need one, and assign a start time. Saturday morning you'll go to the Newport entrance buoy, start at your assigned time and follow the course described below. Just run the course at the speed you normally cruise. Your observer will record your times on the Actual Log as you pass the course check points. You can use your GPS speed readout to set your throttle(s) for the speed you choose to run. Be sure to note that speed on your Actual Log.

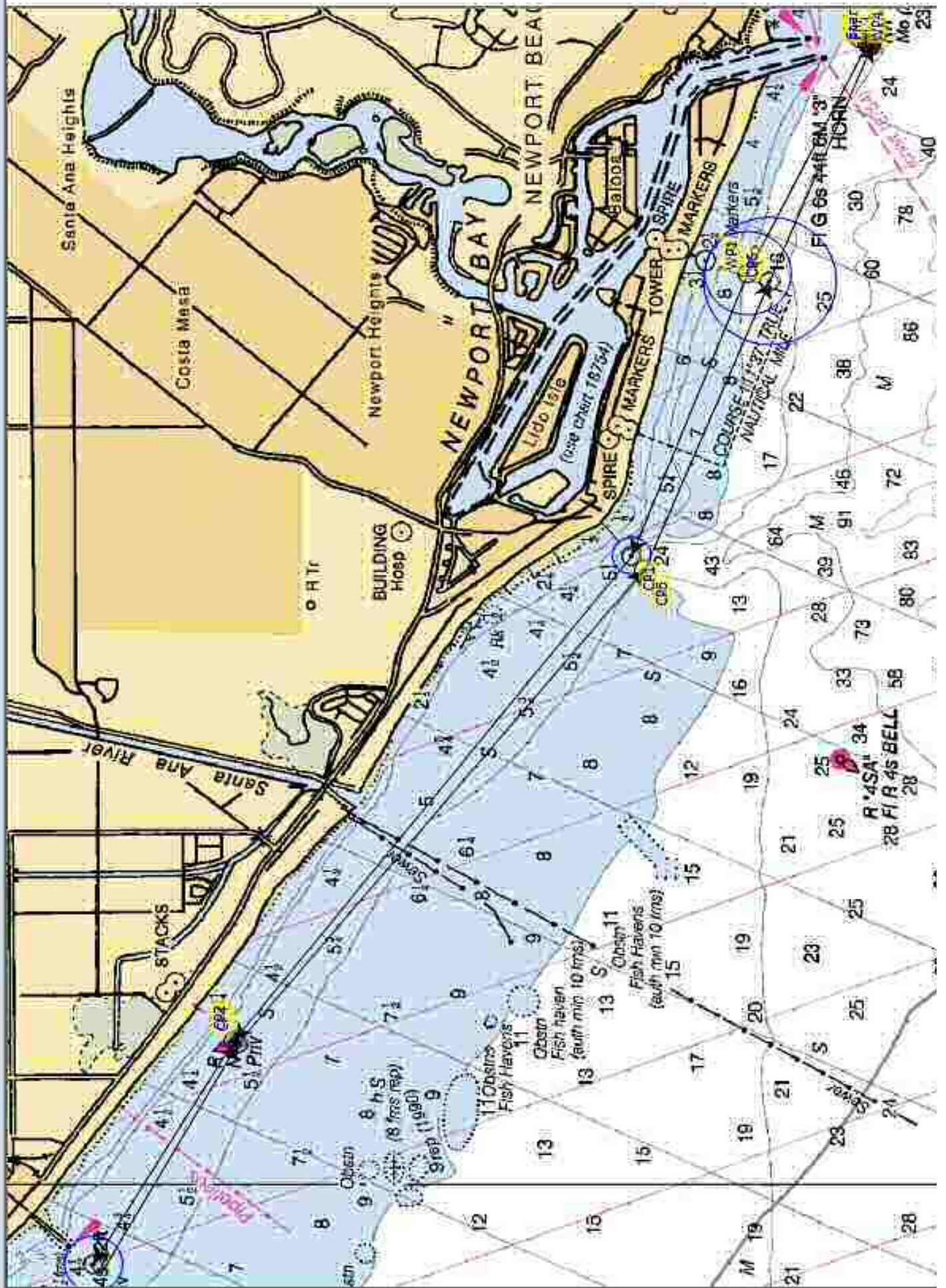
After your Actual Log is turned in, the Committee will use that speed to compute your boat's predicted log and then compute a score for your boat.

It's that simple! Come on out and join in the fun. You'll have a good chance of receiving a trophy at the awards banquet Saturday night.

Courses for the 2016 BCYC Invitational Course

(Note: Positions are approximate depending on the skipper's planned yardage from the marks.)

<u>C.P.</u>	<u>Description</u>	<u>Steer</u>	<u>Pass yds</u>	<u>Latitude</u>	<u>Longitude</u>
Start	Newport Entr. Buoy		50 P	33° 35.074'	117°52.685'
WP1	Balboa Pier (range)	284°	450 S	33° 35.690'	117°54.159'
CP1	Newport Pier (range)	279°	250 S	33° 36.285'	117° 55.970'
CP2	Power Plant Buoy	296°	25 S	33° 38.322'	117° 59.079
CP3	H.B. Pier (range)	289°	325 S	33° 39.043'	118° 00.512
CP4	Power Plant Buoy	107°	50-75 P	33° 38.301'	117° 59.096
CP5	Newport Pier (range)	117°	450 P	33° 36.219'	117° 56.059
CP6	Balboa Pier (range)	100°	650 P	33° 35.576'	117° 54.210
Finish	Newport Entr. Buoy	100°	50 P	33° 35.052	117° 52.698



Bahia Corinthian Invitational 2016 reservations:

Predicted Log / Cruiser Navigation Contest

Saturday; June 11th, 2016

Name: _____ Phone #: _____

Address: _____

Boat name: _____

Yacht club: _____

Beam: _____ Boat length: _____

_____ I will require berthing on Friday, June 10th.

_____ I will require berthing on Saturday, June 11th.

Sunday morning brunch: If interested, suggest you make reservations at BCYC office on Saturday, June 11th.

Above information should be received by June 3rd, 2016, at BCYC in order to plan berthing and dinner arrangements.

Mail to:

Bahia Corinthian Yacht Club
Attn: Susie Brodrick
Front Office Director/Marina Administrator
1601 Bayside Drive
Corona Del Mar, CA 92625