



## James Craig Predicted Log Rally Long Beach to San Diego via Oceanside

July 16-17, 2021

Hosted by the

### **LONG BEACH YACHT CLUB**

The James Craig Trophy was originally known as the James Bennett Trophy. The first contest was in 1907 from New York to Bermuda. The Deed specified that after a skipper won it three times, it was to be kept by the winner. The first and second contests were won by James Craig who elected not to compete for it again and the contest was dropped in 1909. Craig retained the trophy until 1921 when he presented it to the National Association of Engine & Boat Manufacturers for their sponsorship and the name of it was changed to James Craig Trophy. They also made changes in the Deed of Gift, but kept the requirement that the course be at least 150 ocean miles in length. The original silver trophy was stolen in 1925 and NAEBM replaced it with one of gold. From 1927 until 1940 there were no contests, but in 1941 it was placed in competition for the Newport to Coronado event conducted by SCCA and LBYC. In recent years the 2-leg course has traveled from Long Beach to Ensenada via San Diego. Beginning in 2014 it runs from Long Beach to San Diego via Oceanside.

Tom Collins

---

The Overall Craig Rally consists of two major legs. Previously, the first leg ran to San Diego on Saturday, we laid over at SDYC on Sunday, then the second leg ran on to Ensenada on Monday. However, due to changing times, in recent years it has stayed within the United States. In 2014 the Craig Rally was changed to provide a stop at the Oceanside Yacht Club. This breaks the long run from Long Beach to San Diego into two shorter and therefore more enjoyable legs. The Donaldson first leg, sponsored by LBYC, runs from Long Beach to Oceanside. The second leg, sponsored by SCCA, is the Corredores de Baja (translates: Racers of Baja) and runs from Oceanside to San Diego. Points and trophies for both the Donaldson and Corredores legs are determined in the regular manner. Three sets of trophies are awarded. One set for each day's leg, plus a set for the overall Rally. Total error for the overall Craig is determined by combining and averaging the weighted errors from each rally.

---

## Previous Craig Winners

1941	Anne C			1973	Sirene	Dr. Ed Riesen	LBYC
1942-45	No Competition Due to World War II			1974	Blue Chip	Ed Lloyd	SYC
1946	Hoaloha	Don A. Allison	HYC	1975	Sonic	Bob Guhl	CYC
1947	Reveller II	Frank C. Ruppert	LBYC	1976	Nyna Rose	Ralph Chadwick	CYC
1948	Veralee II	Lawrence McDowell	LBYC	1977	Misty Sea	Tom Collins	HYC
1949	Bob-A-Dee	Frank C. Moyer	WCYC	1978	Sunset Queen	Mel Lurie	MYC
1950	Veralee II	Lawrence McDowell	LBYC	1979	Nani Kai	Dexter Wood	LBYC
1951	Veralee II	Lawrence McDowell	LBYC	1980	Sunset Queen	Mel Lurie	MYC
1952	Charlotte Ann	T.A. Benavides	WCYC	1981	Dynamite	Paul Stagg	SWYC
1953	Reveller IV	Frank C. Ruppert	LBYC	1982	Sea Wolf	Rob Wulffson	SIYC
1954	Gilber IV	Gilber Barbris	LBYC	1983	Contrail	Paul Leland	VYC
1955	Doken	Ray Bridges	LBYC	1984	Misty Sea	Tom Collins	HYC
1956	Topper III	R.A. Hoffman	HYC	1986	Misty Sea	Tom Collins	HYC
1957	Reveller V	Frank C. Ruppert	WCYC	1988	Sweet Agnes	Jack Kahlo	HYC
1958	El-Ser-Co II	M.N. Shansby	HYC	1990	Contrail	Paul Leland	DRYC
1959	Reveller V	Frank C. Ruppert	LBYC	1992	Star of Minorca	Walter del Mar	CYC
1960	Reveller V	Frank C. Ruppert	LBYC	1994	Misty Sea	Tom Collins	FWYC
1961	Little Slam	Jack Hughey	SIBYC	1996	Misty Sea	Tom Collins	FWYC
1962	Largo	Thol Simonson	LBYC	1998	Misty Sea	Tom Collins	FWYC
1963	Largo	Thol Simonson	LBYC	2000	Nightwatch	Bob Roth	CYC
1964	C-Shell	Lewis F. Conant	DRYC	2002	Misty Sea	Tom Collins	HHYC
1965	Dolphin	Herbert Ritts	CYC	2004	Misty Sea	Tom Collins	HHYC
1966	Reveller VI	Frank C. Ruppert	LBYC	2006	Black Jack	Craig Ryan	SYC
1967	Reveller VI	Frank C. Ruppert	LBYC	2008	King's X	Dale King	SYC
1968	Crest	Harry H. Palmer	HHYC	2010	Nightwatch	Bob Roth	CYC
1969	Reveller VI	Frank C. Ruppert	LBYC	2012	Misty Sea	Tom Collins	CIYC
1970	Reveller VI	Frank C. Ruppert	LBYC	2014	Grand Plan	Bernie Blockhus	DRYC
1971	Circe	Eugene Grant	CYC	2016	Misty Sea	Tom Collins	CIYC
1972	Shipmates	Bob Wilson	CYC	2018	Misty Sea	Tom Collins	CIYC

# Corredores de Baja

## *HISTORY*

Created in 1979, the Corredores de Baja contest ran from San Diego to Ensenada in association with the James Craig Cruiser Navigation Contest. Before that, the SDYC "International" contest had run from San Diego to Ensenada in August in conjunction with the LBYC Hall Scott contest that ran from Long Beach to San Diego. By 1979 SDYC had dropped the International due to issues with the Mexican authorities and, the Hall Scott was dropped because of the 1977 oil shortage leaving the Craig as the only Long Beach - San Diego contest. Because the Craig provided for a one-week layover in San Diego before the return portion was run from San Diego to Long Beach, some of those who had previously participated in the International conceived the idea of the Corredores as a side trip contest during the layover. Then in 1982 the Corredores was substituted for the return Craig leg. The new Craig-Corredores leg was run from San Diego to Ensenada on Monday and that evening the awards dinner was held at a restaurant ashore where the trophies were presented for both the Corredores and the Craig Overall. In 1986, to avoid the perpetually cold and overcast, sometimes stormy May-June weather, the date for the Craig was moved from Memorial Day weekend to the first weekend following July Fourth.

Although not an official activity of the Craig-Corredores contest, an adjunct to the Corredores involved participation by most skippers in the whimsical Todos Santos Yacht Club. Originally held at Todos Santos Island off Ensenada, the TSYC Opening Day was later held on the Ensenada dock. Opening day was typically filled with various enjoyable activities for all. The Corredores became a very popular element of the Craig Rally.

Unfortunately, several things have led us to stop traveling on down to Ensenada. These include the rapidly escalating price of fuel, the need for Mexican insurance and fishing licenses, Mexican Port Captain fees, new US customs clearance requirements, and other complications relating to clearing into Mexico and back into the U.S.

The present Craig breaks the 90-mile San Diego leg of the Craig into two segments with a stop in Oceanside. With most boats running slower these days to conserve fuel, this will keep the legs under fifty miles each allowing more reasonable start times. The leg to Oceanside on Friday is the Donaldson and the San Diego leg is the Corredores.

*Tom Collins*

# JAMES CRAIG TROPHY RALLY

Sponsored by

## Long Beach Yacht Club

Sanctioned by

## SOUTHERN CALIFORNIA CRUISER ASSOCIATION

James Craig Perpetual Trophy - Overall  
Donaldson - Long Beach to Oceanside Leg Trophy  
Corredores – Oceanside to San Diego Leg Trophy  
Keeper Trophies – Donaldson, Corredores, & Craig Overall  
C. King Brugman Series Points – Craig Overall  
Bathke & Lurie First Year Trophy Points - Each Leg  
Simonson & Top Ten Trophy Points - Each Leg  
N.A.C.A. Season Points - Each Leg

---

- ENTRY REQUIREMENTS:** Open to all eligible members of SCCA and SDCA member clubs.
- RULES:** SCCA Rules, latest revision, shall apply. ([www.socalcruiserassociation.org](http://www.socalcruiserassociation.org))
- RALLY COMMITTEE:** Chairman - Bobby Frazier, (562) 439-0618  
Scorer - Tom Collins, (818) 383-6292  
Committee Boat: Inamorata, VHF Channel 71
- OBSERVERS:** Provided by the skipper in accordance with SCCA Rules.
- LOG FORMS:** Use SCCA Official Entry Form ([www.socalcruiserassociation.org](http://www.socalcruiserassociation.org))
- LBYC BERTHING:** Mooring at LBYC will be by reservation.
- SKIPPER'S MEETING:** All skippers shall meet in the Skippers Cove at LBYC at 1830 on Thursday, July 15 to turn in predicted logs and receive any instructions.
- OCEANSIDE BERTHING:** Contact OYC Dockmaster on VHF channel 68 upon arrival for slip assignment. Some slips may be at the adjacent Jolly Roger restaurant guest dock for which there is a charge. To be fair, any such docking charges will be pro-rated among all boats.
- SDYC BERTHING:** Assignments will be announced on VHF 71 during contest. Monitor SDYC on VHF 69 during docking for last minute changes.
- OBSERVER LOGS:** Observers shall deliver the actual logs to the Scorer within 15 minutes of berthing, but in no event more than one hour after finishing the contest. Contact Misty Sea on VHF Channel 71. Due to the limited time available for scoring, *late logs will not be accepted.*
- REGISTRATION:** Skippers are to register at the office at OYC and SDYC after docking.
- AWARDS:** Results and trophies for the Donaldson leg will be presented at the dinner at OYC on Friday July 16 and the Corredores and Overall results at SDYC on Saturday, July 17. Cocktails commence at 1830.
- RESERVATIONS:** Reservations must be made by July 9 to assure berthing at Long Beach, Oceanside, and San Diego Yacht Clubs and for the awards dinners. Return the attached form.

# CRAIG RALLY

## Donaldson - Long Beach to Oceanside Leg

July 16, 2021

### Course:

Start:	Anaheim Bay entrance buoy R "2" QR WHISTLE	50 yards Port
Checkpoint 1:	Midpoint on a line between Oil Platform EMMY and EVA	
Checkpoint 2:	BUILDING Hosp (Hoag of Newport Beach)	1.3 NM Port
Checkpoint 3:	Abalone Pt.	0.5 NM Port
Checkpoint 4:	South Laguna Hosp	1.0 NM Port
Checkpoint 5:	BLDG (Sign) (N of San Clemente)	4.0 NM Port
Checkpoint 6:	DOME (NORTH OF TWO) (San Onofre)	3.5 NM Port
Checkpoint 7:	Camp Pendleton North Light Fl 6s 63ft 6M	3.5 NM Port
Finish:	Oceanside Entrance Buoy RW "OC" Mo (A) WHIS	200 yards Abeam

### **Special Instructions:**

1. Common Time: 1400 at Finish Checkpoint.
2. Official distance: 47.3 nautical miles. Scoring will not use a handicap.
3. Charts 18746 – 40<sup>th</sup> Ed., 18774 – 12<sup>th</sup> Ed., were used to prepare this course.
4. This is an open log contest. The skipper may have access to all times recorded on the front and back of the log throughout the entire contest.
5. All equipment aboard the vessel may be used except that which is prohibited.
6. Use of any means to determine clock, elapsed, or arrival time is prohibited.
7. GPS may be used in this contest. Display of any time functions such as ETA, ETE, TTG, TIME, must be prevented by use of opaque tape or other means. Chart plotters, subject to the above restrictions, are permitted.
8. GPS may be used for locating and calling checkpoints. Checkpoints specified to be passed within 250 yards must be called by visual observation, regardless of the electronically indicated position. In the event a mark is missing or not visible, use GPS to mark.
9. Skippers are reminded that restrictions prohibit passing within ¼ mile of US Navy and certain other vessels. Severe civil penalties apply for violations. The course between CP 5 and 7 is just outside the charted "Military practice area". It is likely you will encounter military vessels in the area. Take a Time-Out or Dog-Leg as necessary to avoid passing within 500 yards.

**CRAIG RALLY**  
**Corredores - Oceanside to San Diego Leg**  
**July 17, 2021**

**Course:**

Start:	Oceanside Entrance Buoy RW "OC" Mo (A) WHIS	50 yds Port
Checkpoint 1:	STACK (1 nm S Carlsbad)	1.0 NM Port
Checkpoint 2:	TOWER (Del Mar)	1.5 NM Port
Checkpoint 3:	TOWER (La Jolla)	1.5 NM Port
Checkpoint 4:	Range: BLDG & TOWER 338 ft FI R Lt (Mission Bay) 2.0 NM from N M.B. Jetty	
Checkpoint 5:	STATUE (Pt. Loma)	2.0 NM Port
Waypoint 1:	San Diego Approach Buoy RW "SD" Mo (A) WHIS RACON (- -)	50 yards Port
Checkpoint 6:	San Diego Entrance Channel Buoy R "4" Q R BELL	50 yards Port
Checkpoint 7:	San Diego Entrance Channel Buoy R "8" FI R 2.5s	50 yards Port
Finish:	San Diego Entrance Channel Buoy R "14" Q R	50 yards Stbd

**Special Instructions:**

1. Common Time: Checkpoint 5 at 1230.
2. Official distance: 41.8 nautical miles. Scoring will not use a handicap.
3. Charts 18765, 17<sup>th</sup> Ed., 18772, 48<sup>th</sup> Ed., 18773, 43<sup>th</sup> Ed., 18774, 12<sup>th</sup> Ed., were used to prepare this course.
4. Although official waypoints are a required course of travel, they are not checkpoints. Skipper may "mark" any official waypoint; observer is to record the time on the back of actual log.
5. This is an open log contest. The skipper may have access to all times recorded on the front and back of the log throughout the entire contest.
6. All equipment aboard the vessel may be used except that which is prohibited.
7. Use of any means to determine clock, elapsed or arrival time is prohibited.
8. GPS may be used in this contest. Display of any time functions such as ETA, ETE, TTG, or TIME, must be prevented by use of opaque tape or other means. Chart plotters, subject to the above restrictions, are permitted.
9. GPS may be used for locating and calling checkpoints. Checkpoints specified to be passed within 250 yards must be called by visual observation, regardless of the electronically indicated position. In the event a mark is missing or not visible, use GPS to mark.
10. Use caution to avoid kelp between CP4 and CP6. (Usually grows in depths less than 10 fathoms')
11. Skippers are reminded that restrictions prohibit passing within 500 yards of US Navy and certain other vessels. Severe civil penalties apply for violations. Take time-out or dog-leg as necessary.

# CRAIG RALLY

## PARTICIPATION AND RESERVATION FORM

### ***Berthing requirements***

If required at Long Beach Yacht Club Thursday, July 15, estimated arrival time: \_\_\_\_\_  
Oceanside and San Diego berthing assignments will be given out at the Skippers

Meeting on Thursday or over VHF channel 71 when/if available. For last minute berthing assignments or changes, monitor VHF 68 at OYC and VHF 69 at SDYC.

### ***Contestant:***

Name: \_\_\_\_\_ Yacht Club: \_\_\_\_\_

e-Mail: \_\_\_\_\_

Home Phone: \_\_\_\_\_ Cell Phone: \_\_\_\_\_

Boat Name: \_\_\_\_\_ Length: \_\_\_\_\_ Beam: \_\_\_\_\_

### ***Donaldson Leg Dinner***

Date: July 16, 2021

Place: Oceanside Yacht Club

Cocktails: 1830, Buffet Dinner: 1930

Awards: Following dinner or at SDYC on Saturday

Number of dinners requested - pay at the door: \_\_\_\_\_

### ***Corredores de Baja Leg and Craig Rally overall Awards Banquet***

Date: July 17, 2021

Place: San Diego Yacht Club

Cocktails: 1830, Dinner: 1930

Awards: Following dinner

Number of dinners requested - pay at the door: \_\_\_\_\_

**Please e-mail this no later than July 9 to:**

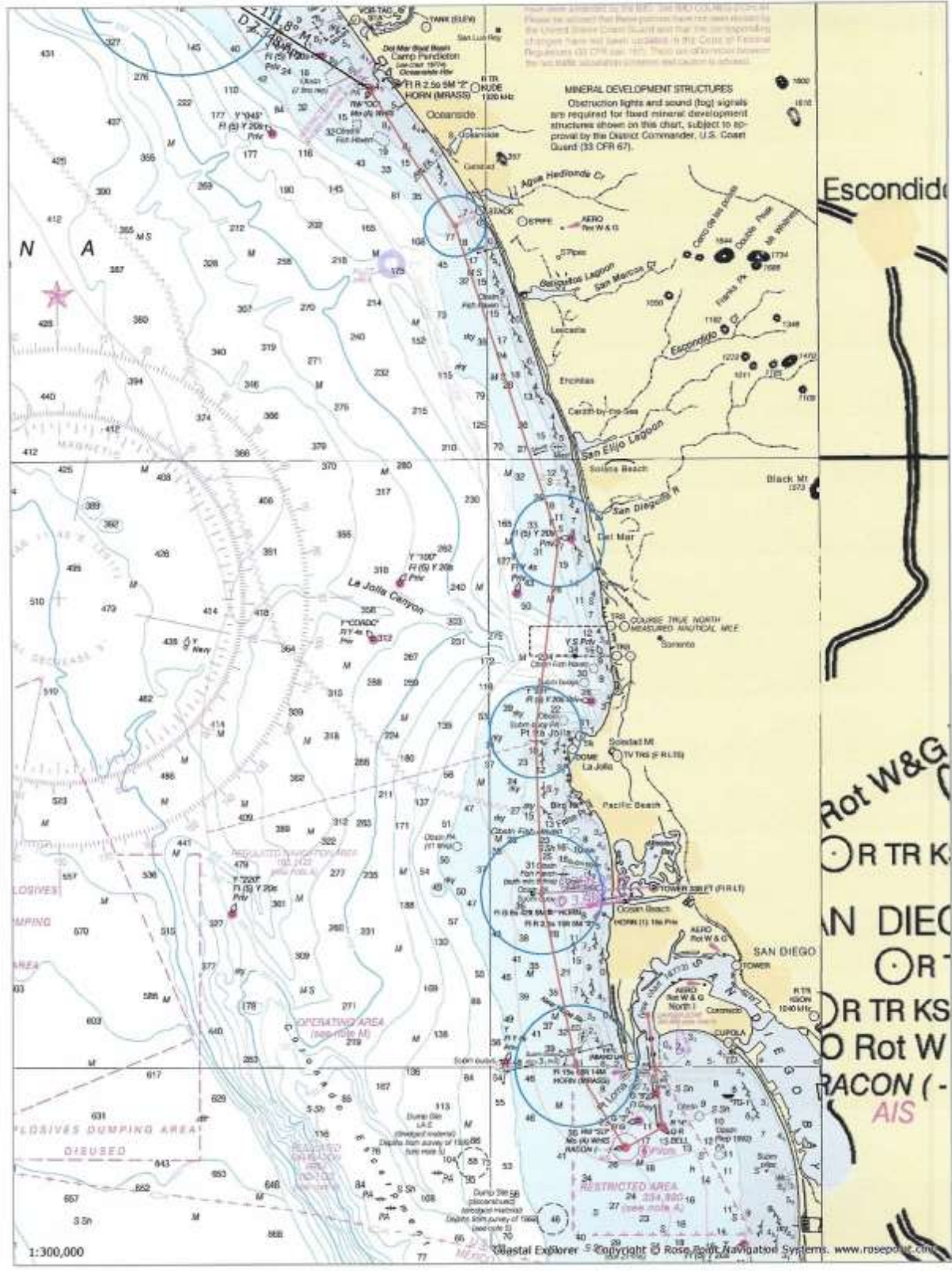
Bobby Frazier

[bobbyfrazier@verizon.net](mailto:bobbyfrazier@verizon.net)









Craig Corredores Leg

# SOUTHERN CALIFORNIA CRUISER ASSOCIATION

Official Cruiser Nav Rally Entry Form

Vessel: \_\_\_\_\_ Rally: \_\_\_\_\_

SCCA Number: \_\_\_\_\_ NACA Number: \_\_\_\_\_ Rally Date: \_\_\_\_\_

## PREDICTED LOG

Checkpoints (no waypoints or blindpoints)	Predicted Clock Time		
	Hrs.	Mins.	Secs.
Start			
1			
2			
3			
4			
5			
6			
7			
8			

I am entering this rally at my own risk and will save, hold harmless and indemnify the SOUTHERN CALIFORNIA CRUISER ASSOCIATION, and such other Club and/or Association that may be sponsoring, hosting, or sanctioning this rally, together with their officers, directors, committees and members, from any and all liability or responsibility of any nature whatsoever for accidents, damage or injury to myself, my crew, my guests and my boat, and for any damage I or my boat might cause to any other boat, person or property, and I waive and relinquish any claim I might have for injury or damage to myself or my boat and against any such association and/or club and/or their officers, directors, committees, or members.

Signature: \_\_\_\_\_ Date: \_\_\_\_\_

**Skipper (print)** \_\_\_\_\_

Address \_\_\_\_\_

Email \_\_\_\_\_ Yacht Club \_\_\_\_\_

Home Phone \_\_\_\_\_ Cell Phone \_\_\_\_\_

Observer Name (Furnished) \_\_\_\_\_ (Assigned) \_\_\_\_\_

**First Year Duffendants Only:**

I certify that it has been less than 12 months since I participated in my first SCCA cruiser nav rally.

Signature \_\_\_\_\_

(SCCA Log Form revised 04/08/2021)

# SOUTHERN CALIFORNIA CRUISER ASSOCIATION

Official Observer Actual Log Form

Vessel: \_\_\_\_\_ Rally: \_\_\_\_\_

**(Observer to fill in gray areas)**

Actual Vessel Number Displayed: \_\_\_\_\_

## ACTUAL LOG

Checkpoints (to be entered by Skipper)	Port or Stbd.	Yards Off	Predicted Start Time		
			Hrs.	Mins.	Secs.
			Adjusted Start Time		
			Hrs.	Mins.	Secs.
Start					
1					
2					
3					
4					
5					
6					
7					
8					

Optional for Skipper:

I have calculated my error to be: \_\_\_\_\_

Blind Point Predictions				
From C.P.#	To B.P.#	Elapsed Time		
		Hrs.	Mins.	Secs.

**Committee Use Only**

Watch Error (Seconds) \_\_\_\_\_ Fast \_\_\_\_\_ Slow \_\_\_\_\_ % Error \_\_\_\_\_

**Equipment checklist to be completed by Observer (Y or N)**

SCCA Burgee \_\_\_\_\_ YC Burgee \_\_\_\_\_ All clocks covered? \_\_\_\_\_  
 Depth Sounder \_\_\_\_\_ VHF Radio \_\_\_\_\_ Chartplotter used? \_\_\_\_\_  
 GPS Used? \_\_\_\_\_ If GPS used, are all the prohibited items on the GPS taped over? \_\_\_\_\_

*Observer is to record all unusual occurrences, rule violations, etc., on reverse side.*

I have read the current SCCA rules and certify that I have abided by them.

Observer \_\_\_\_\_ Date \_\_\_\_\_

I have participated in this rally in the true spirit of yachmanship and have abided by all rules of the SCCA.

Skipper \_\_\_\_\_ Date \_\_\_\_\_

(SCCA Log Form revised 04/08/2021)

# SOUTHERN CALIFORNIA CRUISER ASSOCIATION

Official Cruiser Nav Rally Entry Form

Vessel: \_\_\_\_\_ Rally: \_\_\_\_\_

SCCA Number: \_\_\_\_\_ NACA Number: \_\_\_\_\_ Rally Date: \_\_\_\_\_

## PREDICTED LOG

Checkpoints (no waypoints or blindpoints)	Predicted Clock Time		
	Hrs.	Mins.	Secs.
Start			
1			
2			
3			
4			
5			
6			
7			
8			

I am entering this rally at my own risk and will save, hold harmless and indemnify the SOUTHERN CALIFORNIA CRUISER ASSOCIATION, and such other Club and/or Association that may be sponsoring, hosting, or sanctioning this rally, together with their officers, directors, committees and members, from any and all liability or responsibility of any nature whatsoever for accidents, damage or injury to myself, my crew, my guests and my boat, and for any damage I or my boat might cause to any other boat, person or property, and I waive and relinquish any claim I might have for injury or damage to myself or my boat and against any such association and/or club and/or their officers, directors, committees, or members.

Signature: \_\_\_\_\_ Date: \_\_\_\_\_

**Skipper (print)** \_\_\_\_\_

Address \_\_\_\_\_

Email \_\_\_\_\_ Yacht Club \_\_\_\_\_

Home Phone \_\_\_\_\_ Cell Phone \_\_\_\_\_

Observer Name (Furnished) \_\_\_\_\_ (Assigned) \_\_\_\_\_

**First Year Duffendants Only:**

I certify that it has been less than 12 months since I participated in my first SCCA cruiser nav rally.

Signature \_\_\_\_\_

(SCCA Log Form revised 04/08/2021)

# SOUTHERN CALIFORNIA CRUISER ASSOCIATION

Official Observer Actual Log Form

Vessel: \_\_\_\_\_ Rally: \_\_\_\_\_

**(Observer to fill in gray areas)**

Actual Vessel Number Displayed: \_\_\_\_\_

## ACTUAL LOG

Checkpoints (to be entered by Skipper)	Port or Stbd.	Yards Off	Predicted Start Time		
			Hrs.	Mins.	Secs.
			Adjusted Start Time		
			Hrs.	Mins.	Secs.
Start					
1					
2					
3					
4					
5					
6					
7					
8					

Optional for Skipper:

I have calculated my error to be: \_\_\_\_\_

Blind Point Predictions				
From C.P.#	To B.P.#	Elapsed Time		
		Hrs.	Mins.	Secs.

**Committee Use Only**

Watch Error (Seconds) \_\_\_\_\_ Fast \_\_\_\_\_ Slow \_\_\_\_\_ % Error \_\_\_\_\_

**Equipment checklist to be completed by Observer (Y or N)**

SCCA Burgee \_\_\_\_\_ YC Burgee \_\_\_\_\_ All clocks covered? \_\_\_\_\_  
 Depth Sounder \_\_\_\_\_ VHF Radio \_\_\_\_\_ Chartplotter used? \_\_\_\_\_  
 GPS Used? \_\_\_\_\_ If GPS used, are all the prohibited items on the GPS taped over? \_\_\_\_\_

*Observer is to record all unusual occurrences, rule violations, etc., on reverse side.*

I have read the current SCCA rules and certify that I have abided by them.

Observer \_\_\_\_\_ Date \_\_\_\_\_

I have participated in this rally in the true spirit of yachmanship and have abided by all rules of the SCCA.

Skipper \_\_\_\_\_ Date \_\_\_\_\_

(SCCA Log Form revised 04/08/2021)