

CATALINA ISLAND YACHT CLUB

presents the

2022 CHARLES R. RAMSEY

Predicted Log / Cruiser Navigation Rally

Saturday, September 24, 2022



Contact Tom Collins – 818-383-6292 for information and assistance in entering.

HISTORY OF THE CIYC RAMSEY RALLY

When I first became active in predicted log racing in the early seventies, the Catalina Island Yacht Club's Ramsey predicted log rally was run on the second weekend in September and circled Catalina Island, starting and finishing at Avalon. It still runs in September and it still circles the Island. The Trophy is a very beautiful and traditional looking trophy that dates to the nineteen-twenties and is named for the Club's second commodore in 1925, Charles R. Ramsey. The Ramsey rally date is probably the most stable on the Southern California Cruiser Association schedule. This is because it must be run after Labor Day - after the CIYC activities have died down, but before the Club removes the dinghy dock for the season.

Over at least the past forty years the Ramsey has been one of the most popular rallies on the SCCA schedule. However, interestingly, in 1976 when I assumed the overall SCCA scoring responsibility, there were only three participants. I wasn't on that rally and when I asked for the logs for scoring, they indicated that they had forgotten and left them on the bar at the Club where they had discussed the outcome of the rally.

The next year was different. Andy Dahl of CIYC was responsible for the rally and there were twelve skippers; nine of them were CIYC members! Andy worked diligently on the rally and wrote in some very interesting twists. After all, how many ways are there to circumnavigate Catalina Island? Andy served as the Rally Chairman until the mid-nineties. More recently Steve Askew then Bill Findley have chaired the rally.

Another turning point was in 1984 when the Hollywood Yacht Club's Shultz Night Rally was changed from its traditional mid-July stand-alone night rally to a day rally run from Los Angeles Harbor to Isthmus on the Friday before the Ramsey. This had the advantage of shortening the Ramsey, which could then start from the Isthmus, as well as providing an added draw because SCCA season points could be earned for two rallies in a single weekend. I should note that in keeping with the SCCA policy of allowing only one rally's score to count toward the prestigious Brugman season trophy on a given weekend, the Shultz lost its Brugman designation in favor of the Ramsey which did not please HYC.

Sixteen boats turned out for that rally in 1984 from many of the SCCA clubs. LBYC's Thol Simonson was the winner that year with a 1.102% error. Although there have been many changes over the years in the club hosting the Friday rally to the Isthmus, the popular combination of a Friday rally to the Isthmus coupled with the CIYC Ramsey lives on. (Later HYC's Shultz moved to Avalon in April and regained its Brugman status.)

The Ramsey continues to this date as the one rally not to be missed in the SCCA season schedule. The warm hospitality of the Club is certainly a favorite among the SCCA skippers.

Tom Collins, August 2007, rev. 2021

THE CHARLES R. RAMSEY NAVIGATION RALLY

Catalina Island

Saturday; September 24, 2022

- SPONSORED BY: Catalina Island Yacht Club
- SANCTIONED BY: Southern California Cruiser Association
North American Cruiser Association
- RALLY RULES www.socalcruiserassociation.org/images/master-rulesandby-laws.pdf
- TROPHIES: Ramsey Perpetual Trophy, keeper trophies per SCCA rules, points count toward: C. King Brugman, Bathke, Bobrick, Top Ten, Fall Series, Lurie 1st-Year, Peggy Bent Catalina Trophy and the Thol Simonson Team Trophy.
- ENTRY REQUIREMENTS: Open to all members in good standing of SCCA Member Yacht Clubs.
- RALLY COMMITTEE: Tom Collins, Committee Boat: Misty Sea
Res: (714)-845-9514
Cell: (818)-383-6292
- SKIPPER'S MEETING: There will be no skipper's meeting. Predicted logs to be sealed in envelope and given to Observer prior to start or turned in at the Scott awards at the Isthmus on Friday.
- WORKSHOP: A Zoom workshop to review the course will be held at 1900 on Wednesday September 21. Details will be sent to skippers with reservations.
- OBSERVERS: Skippers to furnish their own.
- LOG FORMS: www.socalcruiserassociation.org/FinalSCCALogForm-2.xls.pdf
- ACTUAL LOG SUBMITTAL: Turn in to the scorer with predicted log and timepiece within ½ hour of mooring, but not later than 1400 hours.
- OFFICIAL SCORER: Tom Collins on Misty Sea.
- MOORING NOTE: After finishing the rally, proceed to the red harbor patrol boat. State that you have participated in the SCCA log rally sponsored by Catalina Island Yacht Club and indicate the mooring you have been assigned; *side ties may be necessary.*
- RESERVATIONS: It is *imperative* that your reservation form is received by noon September 19 to reserve moorings for Sept. 24.
- DINGHY DOCK: Ramsey participants may possibly use the CIYC dinghy dock (TBD) on Saturday evening, Sept. 24.
- SHORE BOATS: VHF 9 for shoreboat transport to Club dock or the pier.

COURSE - 2022 RAMSEY

START:	Isthmus – Buoy G “1” FI G 4s	50 yards stbd
WP 1:	Eagle Reef Buoy R “N ”2”	50 yards port
CP 1:	Arrow Point	100–150 yards port
CP 2:	CATALINA I W END LT FI 6s 76ft 9M	Maintain minimum 250 yards port
WP 2:	250 yards past CP 2 on course 261° M	
WP 3:	Eagle Rock	500 yards port
CP 3:	Ribbon Rock	500 yards port
CP 4:	Ben Weston Point	1000 yards stbd
CP 5:	China Point abeam @ 20 fathom depth	
CP 6:	Salta Verde Point abeam @ 20 fathom depth	
CP 7:	Church Rock abeam	500 yards port
WP 4:	Seal Rocks	500 yards port
WP 5:	North Quarry Buoy FI 4s Priv	100 yards stbd
FINISH:	Pebbly Beach (TANK N of TWO)	400-600 yards port

NOTES & SPECIAL INSTRUCTIONS

- Note 1: Be cautious of underwater reefs when approaching the Start and R N ”2”.
- Note 2: Entire course shall be plotted and run outside the 20 fathom line. This requires that unofficial turnpoints be added to the course. It is not the intent to require the 20 fathom curve be followed.
- Note 3: Compute start time to be 0800. Boats will start 2 minutes apart, fastest boat first. Start times will be assigned on Friday night at the Scott awards at the Isthmus or by cell phone 818-383-6292; call or text after 1830.
- Note 4: This is an open log rally. Skipper may view front and back of actual log throughout the rally.
- Note 5: Any and all equipment aboard the vessel may be used except that which is prohibited. Use of GPS including speed over ground is permitted.
- Note 6: Reference to any time function is prohibited, i.e.: clock, ET, ETA, TTG, etc.
- Note 7: Note that in running the rally, when necessary, specified mark passage distances may be exceeded in the interest of safety. Document any such instance and the necessity on the reverse side of the Actual Log.
- Note 8: Rally communications: VHF 71. Relay may be necessary at times.
- Note 9: Chart: - 18757; 11th edition. Official distance 29.0 nautical miles (YMMV).
- Note 10: This is an Easy Entry eligible rally. EZs *must* state speed on log.

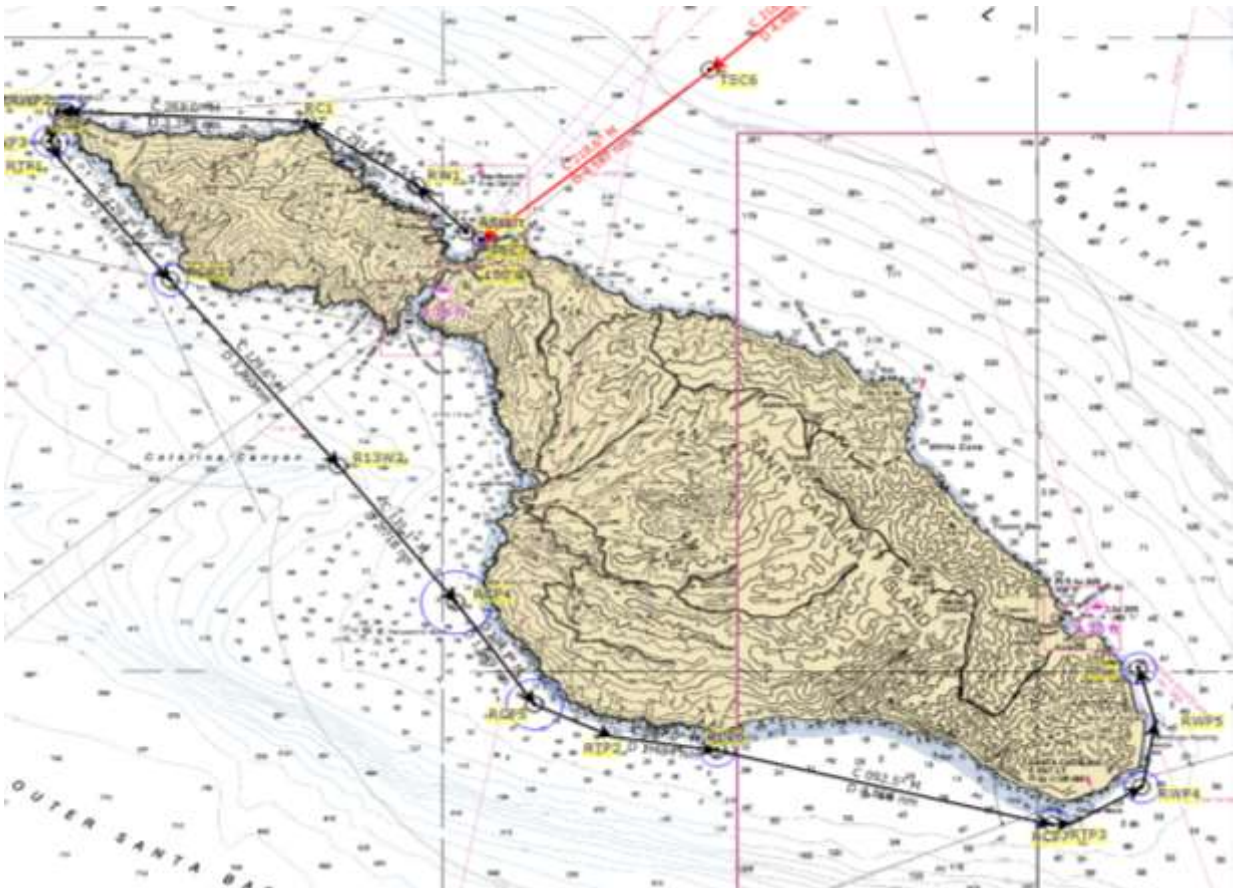
2022 CIYC Ramsey Predicted Log Rally - Easy Entry

A special feature of this year's Catalina Island Yacht Club Ramsey predicted log rally is the provision for Easy-Entry level skippers to enter without the need to run a measured mile or know the boat's speed, nor to prepare and submit a predicted log! The course is just twenty-nine miles around Catalina Island.

It's simple! All you need to do is submit the entry reservation attached to the rally instructions, call for a starting time and run the course. Call in advance and we'll answer any questions you might have. There will be a Zoom Workshop to review the course at 1900 on Sept. 21. Then Saturday morning you'll go to the G "1" buoy at the Isthmus, start at your assigned time, and follow the course described below. Just run the course at the speed you normally cruise which you should note on the Actual Log. Try to maintain exactly that speed using your GPS. Your observer will record your times on the Actual Log as you pass the course checkpoints.

After your Actual Log is turned in, the Committee will use the speed you noted on the Actual Log to prepare a course prediction for your boat.

It's that simple! Come on out and join in the fun. You might even receive a trophy at the CIYC awards dinner on Saturday night.



Ramsey 22 Control Points

For Use by EZ Entry Skippers Only!

Leg to	Bearing	Total	Dista...	End Position
⊙ RStart				33°26.948'N 118°29.605'W
⊙ RW1	316.4° T 304.8° M	1.014 ...	1.014 ...	33°27.682'N 118°30.443'W
⊙ RC1	303.1° T 291.6° M	2.860 ...	1.846 ...	33°28.690'N 118°32.296'W
⊙ RC2	272.6° T 261.0° M	6.238 ...	3.378 ...	33°28.845'N 118°36.342'W
⊙ RWP2	273.0° T 261.5° M	6.361 ...	250 yd	33°28.852'N 118°36.489'W
⊙ RWP3	188.4° T 176.9° M	6.857 ...	0.496 ...	33°28.378'N 118°36.604'W
RTP1	155.4° T 143.9° M	7.177 ...	0.320 ...	33°28.086'N 118°36.450'W
⊙ RCP3	140.8° T 129.2° M	9.632 ...	2.454 ...	33°26.185'N 118°34.590'W
⊙ R13W2	141.1° T 129.5° M	13.391...	3.760 ...	33°23.260'N 118°31.760'W
⊙ RCP4	142.6° T 131.1° M	16.109...	2.718 ...	33°21.101'N 118°29.783'W
⊙ RCP5	145.5° T 134.0° M	18.058...	1.949 ...	33°19.494'N 118°28.463'W
RTP2	114.7° T 103.2° M	19.272...	1.214 ...	33°18.984'N 118°27.146'W
⊙ RCP6	098.5° T 087.0° M	20.757...	1.484 ...	33°18.763'N 118°25.389'W
⊙ RCP7	103.9° T 092.5° M	25.622...	4.866 ...	33°17.591'N 118°19.739'W
RTP3	082.9° T 071.5° M	25.899...	0.277 ...	33°17.623'N 118°19.410'W
⊙ RWP4	059.8° T 048.3° M	27.027...	1.128 ...	33°18.188'N 118°18.243'W
RWP5	009.8° T 358.3° M	28.076...	1.049 ...	33°19.217'N 118°18.019'W
⊙ RFin	344.4° T 333.0° M	28.953...	0.877 ...	33°20.062'N 118°18.298'W

2022 Ramsey Cruiser Navigation Rally
DINNER AND TROPHY PRESENTATION

Saturday; September 24th, 2022

No-Host Cocktail Party at 1830

Dinner will be prepared by the Club

Pay at the door – price to be determined (cash or check, no C.C.)

Note: CIYC bar only accepts credit cards

Results and trophy awards following dinner

INFORMAL - ISLAND CASUAL DRESS

.....

RAMSEY RALLY RESERVATION

Copy this form to an e-mail and send *before noon* Sept. 19, 2022

(CIYC submits their mooring requests to Avalon Harbor Dept. on Monday Sept. 19)

Name: _____ Phone: _____

Boat Name: _____ E-mail: _____

Predicted Boat Speed: _____ knots

Avalon mooring is desired? yes: _____ no: _____

Boat length: _____

Documentation or CF number: _____ (mandatory for mooring)

Number dinners? _____ Pay at door, cash or check only. Price: TBD

Copy and e-mail this form to: twc741@gmail.com *before noon* Sept. 19, 2022

SOUTHERN CALIFORNIA CRUISER ASSOCIATION

Official Cruiser Nav Rally Entry Form

Vessel: _____ Rally: _____

SCCA Number: _____ NACA Number: _____ Rally Date: _____

PREDICTED LOG

Checkpoints (no waypoints or blindpoints)	Predicted Clock Time		
	Hrs.	Mins.	Secs.
Start			
1			
2			
3			
4			
5			
6			
7			
8			

I am entering this rally at my own risk and will save, hold harmless and indemnify the SOUTHERN CALIFORNIA CRUISER ASSOCIATION, and such other Club and/or Association that may be sponsoring, hosting, or sanctioning this rally, together with their officers, directors, committees and members, from any and all liability or responsibility of any nature whatsoever for accidents, damage or injury to myself, my crew, my guests and my boat, and for any damage I or my boat might cause to any other boat, person or property, and I waive and relinquish any claim I might have for injury or damage to myself or my boat and against any such association and/or club and/or their officers, directors, committees, or members.

Signature: _____ Date: _____

Skipper (print) _____

Address _____

Email _____ Yacht Club _____

Home Phone _____ Cell Phone _____

Observer Name (Furnished) _____ (Assigned) _____

First Year Duffendants Only:

I certify that it has been less than 12 months since I participated in my first SCCA cruiser nav rally.

Signature _____

(SCCA Log Form revised 04/08/2021)

SOUTHERN CALIFORNIA CRUISER ASSOCIATION

Official Observer Actual Log Form

Vessel: _____ Rally: _____

(Observer to fill in gray areas)

Actual Vessel Number Displayed: _____

ACTUAL LOG

Checkpoints (to be entered by Skipper)	Port or Stbd.	Yards Off	Predicted Start Time		
			Hrs.	Mins.	Secs.
			Adjusted Start Time		
			Hrs.	Mins.	Secs.
Start					
1					
2					
3					
4					
5					
6					
7					
8					

Optional for Skipper:

I have calculated my error to be: _____

Blind Point Predictions				
From C.P.#	To B.P.#	Elapsed Time		
		Hrs.	Mins.	Secs.

Committee Use Only

Watch Error (Seconds) _____ Fast _____ Slow _____ % Error _____

Equipment checklist to be completed by Observer (Y or N)

SCCA Burgee _____ YC Burgee _____ All clocks covered? _____
 Depth Sounder _____ VHF Radio _____ Chartplotter used? _____
 GPS Used? _____ If GPS used, are all the prohibited items on the GPS taped over? _____

Observer is to record all unusual occurrences, rule violations, etc., on reverse side.

I have read the current SCCA rules and certify that I have abided by them.

Observer _____ Date _____

I have participated in this rally in the true spirit of yachmanship and have abided by all rules of the SCCA.

Skipper _____ Date _____

(SCCA Log Form revised 04/08/2021)