



LONG BEACH YACHT CLUB

Presents the

2024 SEASON OPENER

Cruiser Navigation Rally

March 9, 2024



This rally kicks off the season in SCCA cruiser navigation rallies. Held in the sheltered waters of the Long Beach Harbor, it provides the year's first opportunity for power cruiser skippers to check out their vessels and refresh their skills in this exciting navigational challenge. Long Beach Yacht Club invites its members and all members of Southern California Cruiser Association Yacht Clubs to participate in this fun Cruiser Navigation Rally, previously known as a predicted log contest.

The following is a reprint of an article written by SCCA S/C Tom Collins."

EVOLUTION OF THE "SEASON OPENER"

In 1947, a group of Cruiser Navigation skippers who had been competing under the Southern California Yachting Association (SCYA) met at Ciro's restaurant on Santa Monica Boulevard and organized the Southern California Cruiser Association (SCCA). The intent was to create a separate organization whose primary emphasis was on power cruiser navigation rallies rather than sailboat racing. King Brugman of Long Beach YC was named as the first Commodore. Subsequently the SCCA sanctioned a handful of rallies each year. That tradition has carried on for over 70 years.

The two Cruiser Navigation rallies that had been run during the SCYA's Midwinter and Midsummer Regattas remained with SCYA. They were the Brittain and the Donaldson contests, respectively. Later the Midsummer was dropped and the Donaldson trophy was moved to the Midwinter as the Class B trophy. The host club for the Midwinter log rally alternated yearly between California and Long Beach Yacht Clubs. The entry fee for sailboats in the Midwinter ranged from a couple of bucks for the smallest class of sailboats to a very substantial fee for the largest seventy-plus foot sailboats. In the mid seventies discontent arose when the entry fee for all the predicted loggers was set at the maximum charged for the largest sailboats.

After meetings between the SCYA and the SCCA failed to produce an acceptable resolution to the problem, SCCA withdrew from further participation in the SCYA Midwinter. A replacement contest needed to be created to fill the void in the schedule. Then LBYC fleet captain Arnold Cowan proposed the Season Opener and created the present trophy.

Interestingly, after the split, the Donaldson Trophy was retained by the SCCA and is now used for the first leg of the LBYC hosted Long Beach to San Diego Craig Rally.

The Season Opener Rally typically runs in the sheltered waters of the San Pedro Bay and is a relatively short course that can easily be navigated on a Saturday morning. Skippers usually tie up after the rally at the LBYC Long Dock for lunch in the Lounge and some enjoyable camaraderie. The Awards banquet Saturday evening is a favorite as skippers and crew get together to discuss the contest and catch up on happenings since the previous year's Season Closer. The LBYC Season Opener remains as one of the more popular rallies on the SCCA calendar.

LBYC - SEASON OPENER

CRUISER NAVIGATION RALLY

Saturday, March 9, 2024

- SPONSORED BY: Long Beach Yacht Club
- SANCTIONED BY: Southern California Cruiser Association
North American Cruiser Association
- ELIGIBILITY: All eligible members of SCCA member clubs and per SCCA Rules.
- POINTS FOR: SCCA Brugman, Top Ten, Bathke, Simonson, Lurie, and Spring Series. North American Cruiser Association season trophies.
- TROPHIES: Season Opener Perpetual Trophy.
Keeper Trophies for: Top places overall.
First Place, first year
First-place Easy Entry
- RULES: SCCA latest rules. Download from: SoCalCruiserAssociation.org
- LOG FORMS: SCCA latest version. Download from: SoCalCruiserAssociation.org
- COMMITTEE: Chairman: Bill McCormick C 626-375-4208
Committee Boat: Inamorata VHF Channel 71
Scorer Tom Collins C 818-383-6292
- SKIPPERS' MEETING: None – predictions to be submitted via e-mail to twc741@gmail.com before starting Rally.
- OBSERVERS: Skippers are to furnish their own observer.
- ACTUAL LOGS: Scan or photo of Actual Log to be **e-mailed** to Scorer at twc741@gmail.com no later than 1400.
- BERTHING: Berthing will be assigned by LBYC to the extent available.
Advance overnight berthing reservations are required.
- TROPHY PRESENTATION: 1830 Saturday: No-host cocktails followed by the trophy presentation dinner at 1930. Reservations are required.
(Blazers and ties are the traditional attire for this event.)

Season Opener Cruiser Navigation Contest

Hosted by... **Long Beach Yacht Club**

Saturday – March 9, 2024

The Course:

Start:	Seal Beach Municipal Pier SE corner	100 yards stbd
WP1:	Alamitos Bay East Entrance Jetty - as a range	100 yards stbd
WP2:	Island Chaffee North MARKER (LIGHTED) HORN	100 yards port
CP1:	Belmont Pier – as a range	200 yards stbd
WP3:	Buoy R “2” FI R 4s	25 yards port
CP2:	PIER J, FI 4s 32ft 5M “J”	250 yards stbd
CP3:	PIER 400, Light FI 6s 45ft 5M “S”	200 yards stbd
WP4:	Buoy R “10” QR	50 yards port
CP4:	W end MIDDLE BREAKWATER, FI R 2.5s 42ft 4M “8”	150 yards stbd
WP5:	MIDDLE BREAKWATER corner	75 yards stbd
CP5:	LONG BEACH LT FI 5s 50ft 14M HORN	75 yards stbd
WP6:	Buoy R “2” FI 4s	50 yards port
CP6:	Island Freeman SE MARKER (Lt) HORN	75 yards port
WP7:	Island Chaffee South Marker (Lt) HORN	75 yards port
FINISH:	A – as a range	200-300 yards port

Notes & Rules:

1. Easy-Entry skippers may enter without submitting a predicted log – see attached.
2. Start Saturday morning in order to finish and submit Actual Log no later than 1400
3. Chart used to prepare rally course: 18749, 44th edition. Official distance: 16.2 nm.
4. Rally communications: use VHF channel 71. All vessels shall monitor VHF 16.
5. Skipper may call mark at waypoints. Observer to record WP time on back of Log.
6. All equipment aboard the vessel may be used except that which is prohibited. Use of clock time or elapsed time in any form is prohibited.
7. Use of GPS is permitted including speed. No time information such as ETA, ETE, TTG, etc. may be displayed. Cover any prohibited data display with opaque tape.
8. A chart plotter may be used to display an electronic chart. The vessel's location may be displayed. No time (present, TTG, ETA, etc.) shall be displayed.
9. This is an Open Log rally. Skipper may view the Actual Log during the rally.
10. If ship traffic is encountered, a time out may be called. Call time-in at the same place or return to last called mark. Note details and clock times on back of log.

March 9 2024, LBYC Season Opener Rally - Easy Entry

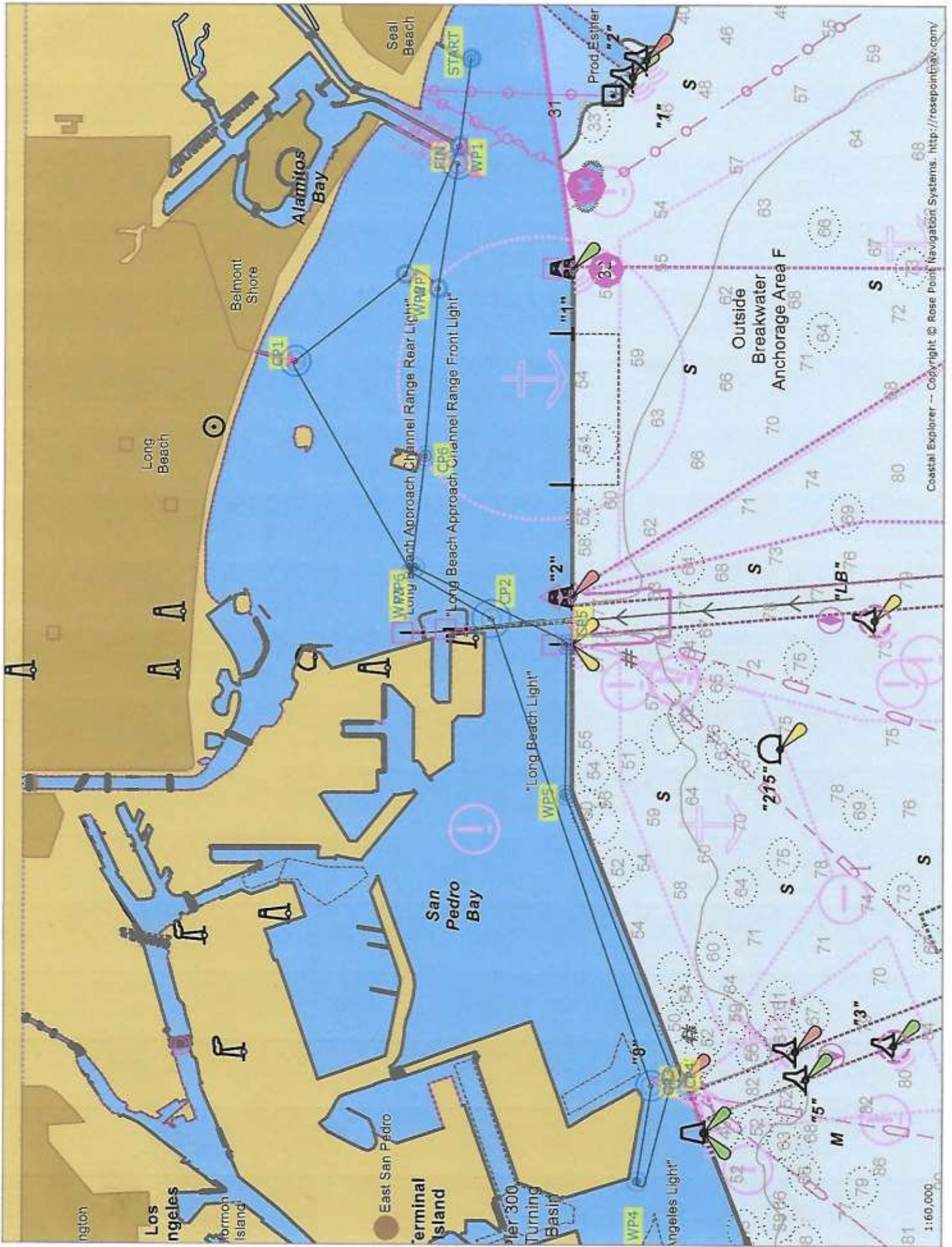
A special feature of the LBYC Season Opener Cruiser Navigation Rally is the provision for Easy-Entry rally skippers to participate without the need to run a measured mile or to prepare and submit a predicted log. The course is just sixteen miles and it's all inside the Long Beach breakwater so you'll be running in sheltered water.

It's simple! Saturday morning go to the Seal Beach Pier and start. Then follow the course instructions to navigate past the control points. Simply run the course at your planned speed. Your observer records the time on the Actual Log when you pass the control points. You can use the speed readout on your GPS to adjust your throttle to maintain the speed you've chosen to run. Be sure to note your planned speed on the front of your log.

After your Log is turned in, the Committee will use the speed you choose to prepare a prediction for your boat. Then they'll compare that prediction with your actual times to figure your score. Join in the FUN!

Course Headings:

To:	Steer:
WP1	266° magnetic
WP2	281°
CP1	310°
WP3	229°
CP2	198°
CP3	258°
WP4	327°
CP4	122°
WP5	042°
CP5	238°
WP6	346°
CP6	093°
WP7	131°
Finish	102°



RESERVATIONS FOR THE 2024 LBYC SEASON OPENER

E-MAIL TO ARRIVE NO LATER THAN March 2, 2024

Name: _____

Phone: _____ Yacht Club: _____

Boat Name: _____

If berthing needed: Length: _____ ft. Beam: _____ ft.

- Enter my vessel in the 2024 Season Opener Cruiser Navigation rally.
- Submit my request for berthing on Friday ____ Saturday ____ night.
If arriving on Friday, my approximate ETA will be: _____.
- Please reserve ____ places for the Trophy Awards Dinner on Saturday evening. (Customary attire – blazers and ties.)
- Pay at the door – Price T.B.D.

Questions: Bill McCormick at 626-375-4208

E-Mail to: Bill McCormick: seament4@aol.com not later than Mar 2.

SOUTHERN CALIFORNIA CRUISER ASSOCIATION

Official Cruiser Nav Rally Entry Form

Vessel: _____ Rally: _____

SCCA Number: _____ NACA Number: _____ Rally Date: _____

PREDICTED LOG

Checkpoints (no waypoints or blindpoints)	Predicted Clock Time		
	Hrs.	Mins.	Secs.
Start			
1			
2			
3			
4			
5			
6			
7			
8			

I am entering this rally at my own risk and will save, hold harmless and indemnify the SOUTHERN CALIFORNIA CRUISER ASSOCIATION, and such other Club and/or Association that may be sponsoring, hosting, or sanctioning this rally, together with their officers, directors, committees and members, from any and all liability or responsibility of any nature whatsoever for accidents, damage or injury to myself, my crew, my guests and my boat, and for any damage I or my boat might cause to any other boat, person or property, and I waive and relinquish any claim I might have for injury or damage to myself or my boat and against any such association and/or club and/or their officers, directors, committees, or members.

Signature: _____ Date: _____

Skipper (print) _____

Address _____

Email _____ Yacht Club _____

Home Phone _____ Cell Phone _____

Observer Name (Furnished) _____ (Assigned) _____

First Year Duffendants Only:

I certify that it has been less than 12 months since I participated in my first SCCA cruiser nav rally.

Signature _____

(SCCA Log Form revised 04/08/2021)

SOUTHERN CALIFORNIA CRUISER ASSOCIATION

Official Observer Actual Log Form

Vessel: _____ Rally: _____

(Observer to fill in gray areas)

Actual Vessel Number Displayed: _____

ACTUAL LOG

Checkpoints (to be entered by Skipper)	Port or Stbd.	Yards Off	Predicted Start Time		
			Adjusted Start Time		
			Hrs.	Mins.	Secs.
Start					
1					
2					
3					
4					
5					
6					
7					
8					

Optional for Skipper:

I have calculated my error to be: _____

Blind Point Predictions				
From C.P.#	To B.P.#	Elapsed Time		
		Hrs.	Mins.	Secs.

Committee Use Only		
Watch Error (Seconds)	_____	Fast
	_____	Slow
	_____	% Error

Equipment checklist to be completed by Observer (Y or N)

SCCA Burgee	_____	YC Burgee	_____	All clocks covered ?	_____
Depth Sounder	_____	VHF Radio	_____	Chartplotter used?	_____
GPS Used ?	_____	If GPS used, are all the prohibited items on the GPS taped over?			_____

Observer is to record all unusual occurrences, rule violations, etc., on reverse side.

I have read the current SCCA rules and certify that I have abided by them.

Observer _____ Date _____

I have participated in this rally in the true spirit of yachmanship and have abided by all rules of the SCCA.

Skipper _____ Date _____

(SCCA Log Form revised 04/08/2021)