



LONG BEACH YACHT CLUB

Presents the

2025 SEASON OPENER

Cruiser Navigation Rally

March 8, 2025



This rally kicks off the season in SCCA cruiser navigation rallies. Held in the sheltered waters of the Long Beach Harbor, it provides the year's first opportunity for power cruiser skippers to check out their vessels and refresh their skills in this exciting navigational challenge. Long Beach Yacht Club invites its members and all members of Southern California Cruiser Association Yacht Clubs to participate in this fun Cruiser Navigation Rally, previously known as a predicted log contest.

The following is a reprint of an article written by SCCA S/C Tom Collins."

EVOLUTION OF THE "SEASON OPENER"

In 1947, a group of Cruiser Navigation skippers who had been competing under the Southern California Yachting Association (SCYA) met at Ciro's restaurant on Santa Monica Boulevard and organized the Southern California Cruiser Association (SCCA). The intent was to create a separate organization whose primary emphasis was on power cruiser navigation rallies rather than sailboat racing. King Brugman of Long Beach YC was named as the first Commodore. Subsequently the SCCA sanctioned a handful of rallies each year. That tradition has carried on for over 70 years.

The two Cruiser Navigation rallies that had been run during the SCYA's Midwinter and Midsummer Regattas remained with SCYA. They were the Brittain and the Donaldson contests, respectively. Later the Midsummer was dropped and the Donaldson trophy was moved to the Midwinter as the Class B trophy. The host club for the Midwinter log rally alternated yearly between California and Long Beach Yacht Clubs. The entry fee for sailboats in the Midwinter ranged from a couple of bucks for the smallest class of sailboats to a very substantial fee for the largest seventy-plus foot sailboats. In the mid seventies discontent arose when the entry fee for all the predicted loggers was set at the maximum charged for the largest sailboats.

After meetings between the SCYA and the SCCA failed to produce an acceptable resolution to the problem, SCCA withdrew from further participation in the SCYA Midwinter. A replacement contest needed to be created to fill the void in the schedule. Then LBYC fleet captain Arnold Cowan proposed the Season Opener and created the present trophy.

Interestingly, after the split, the Donaldson Trophy was retained by the SCCA and is now used for the first leg of the LBYC hosted Long Beach to San Diego Craig Rally.

The Season Opener Rally typically runs in the sheltered waters of the San Pedro Bay and is a relatively short course that can easily be navigated on a Saturday morning. Skippers usually tie up after the rally at the LBYC Long Dock for lunch in the Lounge and some enjoyable camaraderie. The Awards banquet Saturday evening is a favorite as skippers and crew get together to discuss the contest and catch up on happenings since the previous year's Season Closer. The LBYC Season Opener remains as one of the more popular rallies on the SCCA calendar.

LBYC - SEASON OPENER

CRUISER NAVIGATION RALLY

Saturday, March 8, 2025

- SPONSORED BY: Long Beach Yacht Club
- SANCTIONED BY: Southern California Cruiser Association
North American Cruiser Association
- ELIGIBILITY: All eligible members of SCCA member clubs and per SCCA Rules.
- POINTS FOR: SCCA Brugman, Top Ten, Bathke, Simonson, Lurie, and Spring Series. North American Cruiser Association season trophies.
- TROPHIES: Season Opener Perpetual Trophy.
Keeper Trophies for: Top places overall.
First Place, first year
First-place Easy Entry
- RULES: SCCA latest rules. Download from: SoCalCruiserAssociation.org
- LOG FORMS: SCCA latest version. Download from: SoCalCruiserAssociation.org
- COMMITTEE: Chairman: Bill McCormick C 626-375-4208
Committee Boat: Inamorata VHF Channel 71
Scorer Tom Collins C 818-383-6292
- SKIPPERS' MEETING: None – predictions to be submitted via e-mail to twc741@gmail.com before starting Rally.
- OBSERVERS: Skippers are to furnish their own observer.
- ACTUAL LOGS: Scan or photo of Actual Log to be e-mailed to Scorer at twc741@gmail.com no later than 1400.
- BERTHING: Berthing will be assigned by LBYC to the extent available.
Advance overnight berthing reservations are required.
- TROPHY PRESENTATION: 1830 Saturday: No-host cocktails followed by the trophy presentation dinner at 1930. Reservations are required.

Season Opener Cruiser Navigation Contest

Hosted by: **Long Beach Yacht Club**

Saturday – March 8th, 2025

The Course:

Start:	LONG BEACH BREAKWATER, East End, FL G 6s 43ft 5M “1”	200 yards port
CP-1:	Island Chaffee -Westernmost MARKER (Lt)	200 yards stbd
CP-2:	BELMONT PIER – as-a-range	200 yards off pier
CP-3:	Island Freeman - SE MARKER (LIGHTED)	100 yard stbd
WP-1:	Buoy R “2” FI G 4s	50 yards stbd
CP-4:	Pier J Light, FI W 4s 32 Ft 5M “J”	250 yards stbd
WP-2:	Pier J Light, FI R 4s 30 Ft 5M “4”	125 yards stbd
WP-3:	Pier J Light, FI R 6s 30 Ft 5M “6”	125 yards stbd
CP-5:	Pier F Light, FI R 2.5s 20 Ft 5M “10”	50 yards stbd
WP-4:	NAVAL BASE MOLE Light, FI G 2.5s 26ft 5M “9”	50 yards stbd
WP-5:	Pier 400 Light, FI W 2.5s 15 Ft 5M “A”	100 yards stbd
CP-6:	Buoy, G “3” FI G 4s	50 yards stbd
WP-6:	Long Beach Breakwater, west Measured Mile Marker	100 yards stbd
WP-7:	Island Freeman, SW MARKER (LIGHTED)	100 yards stbd
CP-7:	NW Corner Island Freeman (turn minimum 5 sec after calling mark)	100 yards stbd
WP-8:	Southernmost MARKER (Lt) Island Chaffee	100 yards port
FINISH:	Alamitos Bay West Entrance Jetty, as-a -range	200 yards off

Season Opener Cruiser Navigation Contest

Hosted by: **Long Beach Yacht Club**

Saturday – March 8th, 2025

Notes & Rules:

- 1 Start Time: Start at skipper's discretion to turn in logs by 1300.
- 2 Contest prepared using charts: 18749 – 43rd Ed
- 3 Official distance: 15.0 nautical miles (your distance may vary depending on your distance off the marks).
- 4 No handicap.
- 5 Race communications: VHF 71.
- 6 All equipment aboard the vessel may be used including GPS, chart plotters, etc., except that which is prohibited in item 7 below.
- 7 Use of the following data is prohibited: Clock time, elapsed time or and time based functions, i.e.: TTG, ETA, ETE, etc.
- 8 This regatta will allow an open log. During the regatta the skipper may have access to all times that are recorded on the front and back of the Actual Log. Official waypoint times may be recorded on the back of the Actual Log.
- 9 Skippers should announce "Five minutes to start" via VHF 71 if other SCCA rally vessels are in the immediate vicinity.

Easy Entry, LBYC Season Opener Rally, March 8 2025

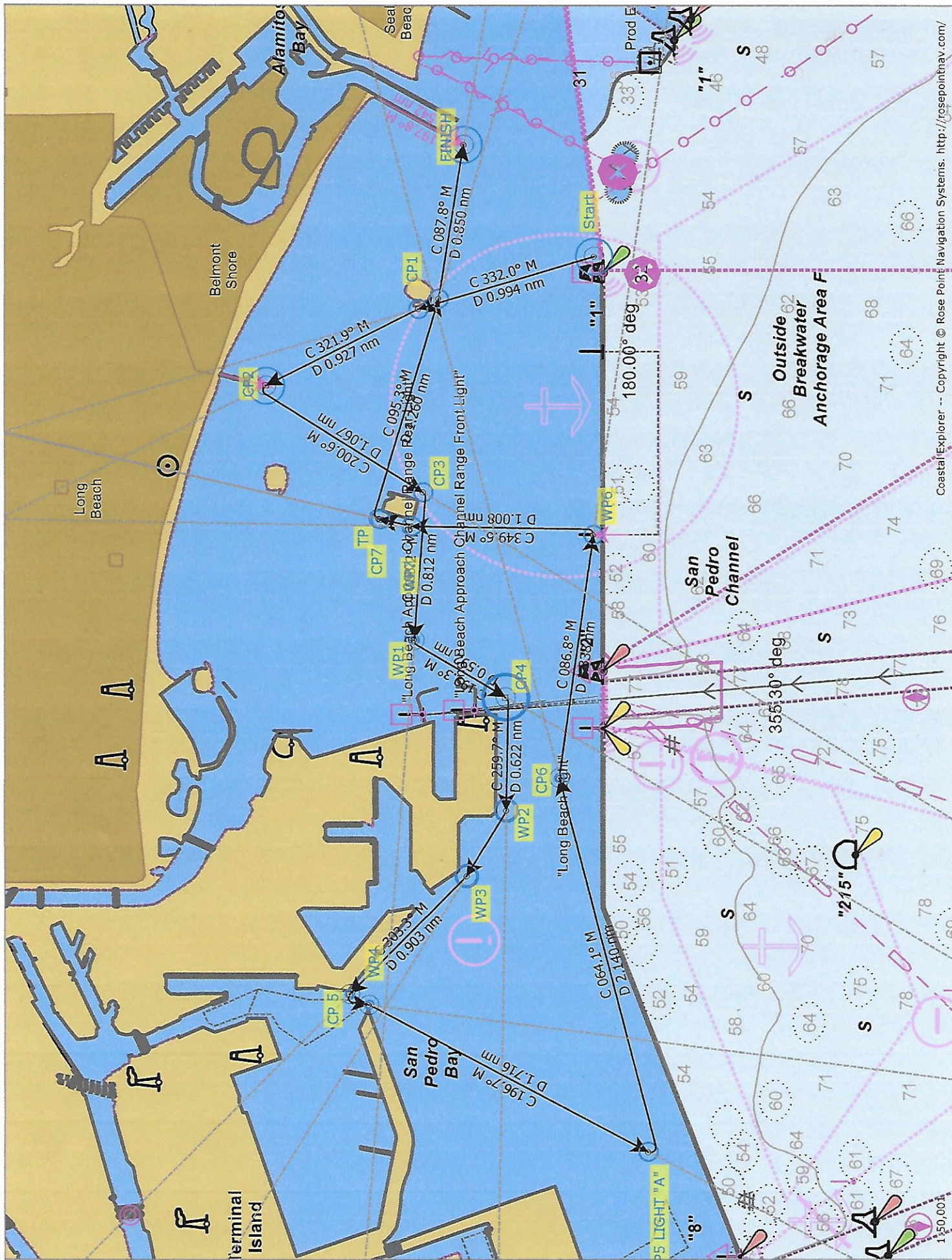
A special feature of the LBYC Season Opener Cruiser Navigation Rally is the provision for Easy-Entry rally skippers to participate without the need to run a measured mile or to prepare and submit a predicted log. The course is just fifteen miles and it's all inside the Long Beach breakwater so you'll be running in sheltered water.

It's simple! Saturday morning go to the east end of the Long Beach breakwater and start. Then follow the course instructions to navigate past the control points. Simply run the course at your planned speed. Your observer records the time on the Actual Log when you pass the control points. You can use the speed readout on your GPS to adjust your throttle to maintain the speed you've chosen to run. Be sure to note your planned speed on the front of your log.

After your Log is turned in, the Committee will use the speed you choose to prepare a prediction for your boat. They'll compare that prediction with your actual times to figure your score. Come to the Awards dinner that evening to see how you did. Join in the FUN!

Course Headings:

To:	Steer:
CP1	331° magnetic
CP2	323°
CP3	201°
WP1	263°
CP4	199°
WP2	260
WP3	290°
CP5	303°
WP4	176°
WP5	197°
CP6	064°
WP6	087°
WP7	350°
CP7	002°
TP	002
WP8	095
Finish	088°



RESERVATIONS

SEASON OPENER 2025

Predicted Log / Cruiser Navigation Contest

Saturday; March 8, 2025

Name: _____

Boat name: _____

Telephone # _____ E-mail address _____

Number of dinners: Double Cut Pork Chop ____ Cedar Plank Salmon ____

Awards dinner on Saturday, March 8. Cocktails at 1830; Dinner at 1930.

Yacht Club Causal Dress

Menu:

Cedar Plank Salmon (Verlasso Salmon, Sweet Honey Mustard, Roasted Fingerling Potatoes, Blistered Haricot Vert)

Double Cut Pork Chop (Parmesan Stone Ground White Grits, Swiss Chard, Lemon Caper Cream Sauce)

*Dinners include a complimentary cup of soup or dinner salad or chop salad

Dinner cost is \$50. Pay at the door (cash or check only).

Email reservation to Bill McCormick - seament4@aol.com no later than Monday, March 3

A limited number of slips will be available for those wishing to come to LBYC by boat. If slip is requested, please include boat length and beam and contact Bill McCormick directly at 626-375-4208

Dinner reservations are needed by Monday afternoon, March 3

SOUTHERN CALIFORNIA CRUISER ASSOCIATION

Official Cruiser Nav Rally Entry Form

Vessel: _____ Rally: _____

SCCA Number: _____ NACA Number: _____ Rally Date: _____

PREDICTED LOG

Checkpoints (no waypoints or blindpoints)	Predicted Clock Time		
	Hrs.	Mins.	Secs.
Start			
1			
2			
3			
4			
5			
6			
7			
8			

I am entering this rally at my own risk and will save, hold harmless and indemnify the SOUTHERN CALIFORNIA CRUISER ASSOCIATION, and such other Club and/or Association that may be sponsoring, hosting, or sanctioning this rally, together with their officers, directors, committees and members, from any and all liability or responsibility of any nature whatsoever for accidents, damage or injury to myself, my crew, my guests and my boat, and for any damage I or my boat might cause to any other boat, person or property, and I waive and relinquish any claim I might have for injury or damage to myself or my boat and against any such association and/or club and/or their officers, directors, committees, or members.

Signature: _____ Date: _____

Skipper (print) _____

Address _____

Email _____ Yacht Club _____

Home Phone _____ Cell Phone _____

Observer Name (Furnished) _____ (Assigned) _____

First Year Duffendants Only:

I certify that it has been less than 12 months since I participated in my first SCCA cruiser nav rally.

Signature _____

(SCCA Log Form revised 04/08/2021)

SOUTHERN CALIFORNIA CRUISER ASSOCIATION

Official Observer Actual Log Form

Vessel: _____ Rally: _____

(Observer to fill in gray areas)

Actual Vessel Number Displayed: _____

ACTUAL LOG

Checkpoints (to be entered by Skipper)	Port or Stbd.	Yards Off	Predicted Start Time		
			Adjusted Start Time		
			Hrs.	Mins.	Secs.
Start					
1					
2					
3					
4					
5					
6					
7					
8					

Optional for Skipper:

I have calculated my error to be: _____

Blind Point Predictions				
From C.P.#	To B.P.#	Elapsed Time		
		Hrs.	Mins.	Secs.

Committee Use Only		
Watch Error (Seconds)	_____	Fast
	_____	Slow
	_____	% Error

Equipment checklist to be completed by Observer (Y or N)

SCCA Burgee	_____	YC Burgee	_____	All clocks covered ?	_____
Depth Sounder	_____	VHF Radio	_____	Chartplotter used?	_____
GPS Used ?	_____	If GPS used, are all the prohibited items on the GPS taped over?			_____

Observer is to record all unusual occurrences, rule violations, etc., on reverse side.

I have read the current SCCA rules and certify that I have abided by them.

Observer _____ Date _____

I have participated in this rally in the true spirit of yachmanship and have abided by all rules of the SCCA.

Skipper _____ Date _____

(SCCA Log Form revised 04/08/2021)