

# HUNTINGTON HARBOUR YACHT CLUB

presents the

## **2025 SEASON CLOSER**

Predicted Log / Cruiser Navigation Rally

**Saturday; October 11, 2025**



*With EZ-Entry for new participants*

# 2025 SEASON CLOSER

Hosted By

## HUNTINGTON HARBOUR YACHT CLUB

Saturday - October 11th, 2025

- Sponsored by:      Huntington Harbour Yacht Club
- Sanctioned by:     SCCA & NACA
- Eligibility:         All eligible members of SCCA member clubs and per SCCA Rules.
- Points for:         SCCA Fall Series, Top Ten, Bathke, Bobrick, Simonson, Brugman, Lurie. NACA season trophies,
- Trophies:           Keeper Trophies in accordance with SCCA rules.
- Rules:               SCCA Rules: [www.SoCalCruiserAssociation.org](http://www.SoCalCruiserAssociation.org) under Downloads
- Skipper's meeting   None. Scan or take a photo of Predicted Log and email to Scorer: [twc741@gmail.com](mailto:twc741@gmail.com) prior to start of Rally.
- Logs:                Use attached form. Turn in the Actual log by scanning or taking a photo of Actual Log and email to Scorer: [twc741@gmail.com](mailto:twc741@gmail.com) before 1330.
- Contest committee: Chairpersons: Bill and Ann McCormick at 626-375-4208
- Committee boat:     INAMORATA – Monitor VHF 71 for race communications and VHF 16 for safety.
- Scorer:               Tom Collins – 818-383-6292
- Observers:          To be provided by skipper.
- Berthing:            See "Reservations" page for details of berthing and dinner.
- Dinner & awards:    At Long Beach YC – Library. Cocktails at 1800, Dinner at 1830, Order off menu. Awards follow.

# 2025 Season Closer

## The Course:

Start:	Alamitos Bay east Jetty – as-a-range	150 yards
CP-1:	Anaheim Entrance Buoy G “1”	50 yards stbd
CP-2:	East end Long Beach breakwater Fl G 6s 43ft 5M "1" HORN	75 yards port
CP-3:	West End Long Beach Breakwater light “2”	75 yards port
WP-1:	Corner of MIDDLE BREAKWATER – inside B/W	75 yards port
CP-4:	Long Beach Channel Lighted Buoy G “3” Fl G 4s	50 yards port
WP-2:	Northwest Corner Island Freeman	75 yards stbd
CP-5:	Lighted Channel Buoy R “2” Fl R 4s	50 yards stbd
WP-3:	Island Grissom east Beacon	75 yards port
CP-6:	Belmont Pier	175-225 yards port
WP-4:	Island White south Beacon	75 yards stbd
CP-7:	Island Freeman northeast Beacon	75 yards stbd
WP-5:	Island Chaffee south Beacon	75 yards port
Finish:	Alamitos Bay west Jetty – as-a-range	200 yards

## Notes & Rules:

- 1 Start Time: Start at skipper’s discretion to submit logs by 1330.
- 2 Contest prepared using chart: US5CA61M (formerly 18749)
- 3 Official distance: 15.2 nautical miles (your distance may vary depending on your distance off the marks).
- 4 No handicap.
- 5 Race communications: VHF 71.
- 6 All equipment aboard the vessel may be used including GPS, chart plotters, etc., except that which is prohibited in item 7 below.
- 7 Use of the following data is prohibited: Clock time or elapsed time.
- 8 This regatta will allow an open log where during the regatta the skipper may have access to all times that are recorded on the front and back of the Actual Log. Official waypoint times may be recorded on the back of the Actual Log.
- 9 Vessels should announce “Five minutes to start” via VHF 71 if other SCCA vessels are in the immediate vicinity.

## 2025 HHYC Cruiser Nav / Predicted Log Rally – Easy Entry

A special feature of this HHYC Season Closer Rally is the provision for Easy-Entry level skippers to enter without the need to run a measured mile in advance or prepare a predicted log! The course is just 15 miles inside the LA/LB breakwater.

It's easy! All you need to do is submit the entry reservation and run the course. Call in advance and we'll answer any questions and even help you plan your run.

On Saturday morning - go to the start at the Anaheim Bay entrance east jetty, start any time before 1130 and follow the course. Just run the course at the speed you normally cruise using your GPS to maintain that speed throughout the course - *note your intended speed on the Actual Log*. Your observer will record your clock-times on the Actual Log as you call MARK when you pass the course control points.

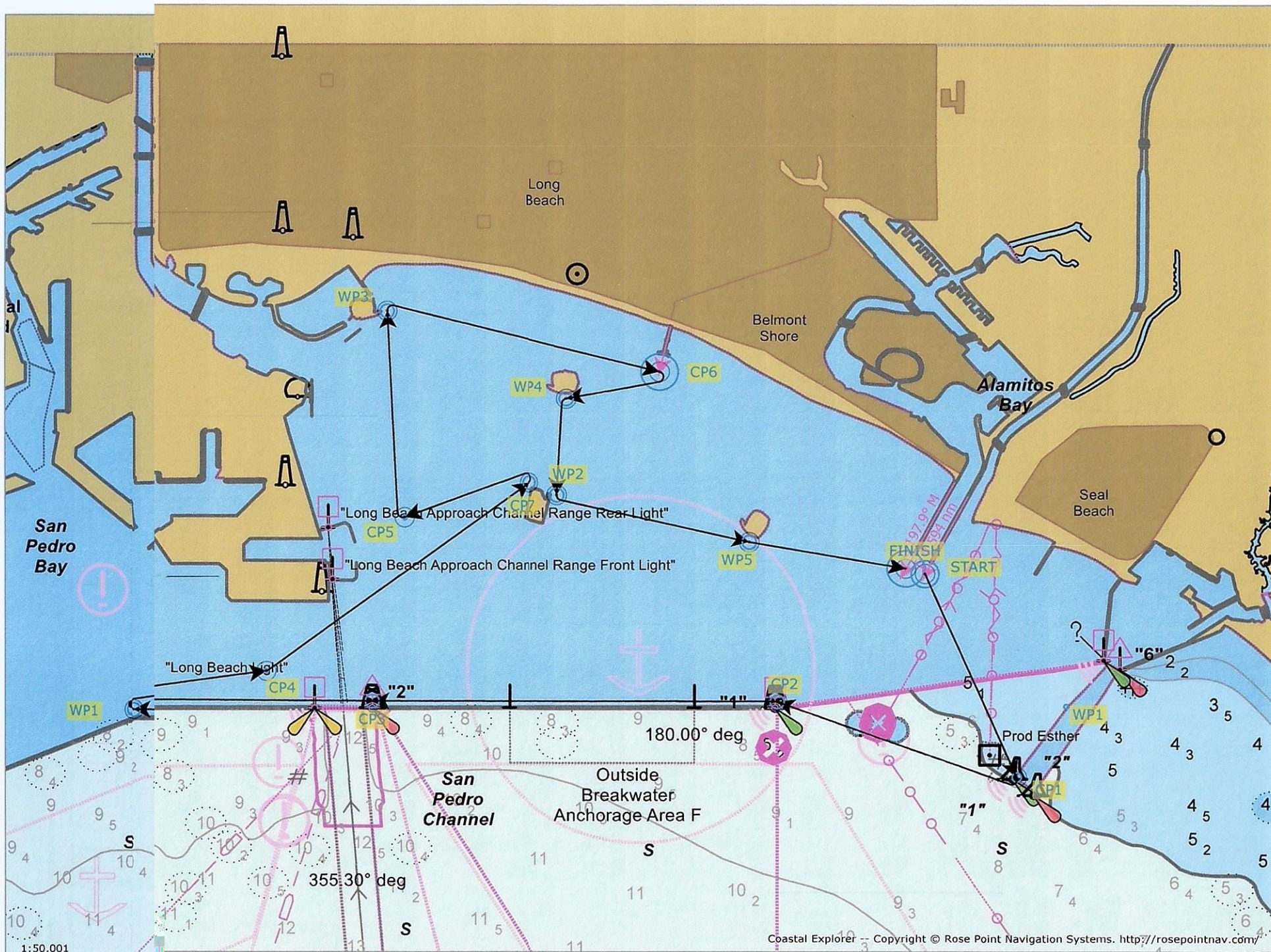
Once your Actual Log is submitted, the Committee will use the speed you chose to prepare a prediction for your boat then compute your score using the actual times recorded by your observer.

It's simple! Come on out and join in the fun. You'll enjoy a scenic cruise and have a chance of receiving a trophy at the awards dinner on Saturday night.

### Headings for the Season Closer

	<u>Control Point</u>	<u>Heading</u>
Start:	Alamitos Bay east Jetty – as-a-range	N/A
CP-1:	Anaheim Entrance Buoy G “1”	145 M
CP-2:	East end Long Beach breakwater FI G 6s 43ft 5M "1" HORN	279 M
CP-3:	West End Long Beach Breakwater light “2”	259 M
WP-1:	Corner of MIDDLE BREAKWATER – inside B/W	259 M
CP-4:	Long Beach Channel Lighted Buoy G “3” FI G 4s	071 M
WP-2:	Northwest Corner Island Freeman	043 M
CP-5:	Lighted Channel Buoy R “2” FI R 4s	239 M
WP-3:	Island Grissom east Beacon	346 M
CP-6:	Belmont Pier	093 M
WP-4:	Island White south Beacon	249 M
CP-7:	Island Freeman northeast Beacon	172 M
WP-5:	Island Chaffee south Beacon	092 M
Finish:	Alamitos Bay west Jetty – as-a-range	089 M







# SOUTHERN CALIFORNIA CRUISER ASSOCIATION

## Official Cruiser Nav Rally Entry Form

Vessel: \_\_\_\_\_ Rally: \_\_\_\_\_

SCCA Number: \_\_\_\_\_ NACA Number: \_\_\_\_\_ Rally Date: \_\_\_\_\_

### PREDICTED LOG

Checkpoints (no waypoints or blindpoints)		Predicted Clock Time		
		Hrs.	Mins.	Secs.
Start				
1				
2				
3				
4				
5				
6				
7				
8				

I am entering this rally at my own risk and will save, hold harmless and indemnify the SOUTHERN CALIFORNIA CRUISER ASSOCIATION, and such other Club and/or Association that may be sponsoring, hosting, or sanctioning this rally, together with their officers, directors, committees and members, from any and all liability or responsibility of any nature whatsoever for accidents, damage or injury to myself, my crew, my guests and my boat, and for any damage I or my boat might cause to any other boat, person or property, and I waive and relinquish any claim I might have for injury or damage to myself or my boat and against any such association and/or club and/or their officers, directors, committees, or members.

Signature: \_\_\_\_\_ Date: \_\_\_\_\_

**Skipper (print)** \_\_\_\_\_

Address \_\_\_\_\_

Email \_\_\_\_\_ Yacht Club \_\_\_\_\_

Home Phone \_\_\_\_\_ Cell Phone \_\_\_\_\_

Observer Name (Furnished) \_\_\_\_\_ (Assigned) \_\_\_\_\_

#### First Year Duff Wadants Only:

I certify that it has been less than 12 months since I participated in my first SCCA cruiser nav rally.

Signature \_\_\_\_\_

(SCCA Log Form revised 04/08/2021)

# SOUTHERN CALIFORNIA CRUISER ASSOCIATION

## Official Observer Actual Log Form

Vessel: \_\_\_\_\_ Rally: \_\_\_\_\_

(Observer to fill in gray areas)

Actual Vessel Number Displayed: \_\_\_\_\_

### ACTUAL LOG

Checkpoints (to be entered by Skipper)		Port or Stbd.	Yards Off	Predicted Start Time		
				Adjusted Start Time		
Start				Hrs.	Mins.	Secs.
1						
2						
3						
4						
5						
6						
7						
8						

Optional for Skipper:

I have calculated my error to be: \_\_\_\_\_

Blind Point Predictions				
From C.P.#	To B.P.#	Elapsed Time		
		Hrs.	Mins.	Secs.

#### Committee Use Only

Watch Error (Seconds) \_\_\_\_\_ Fast  
 \_\_\_\_\_ Slow  
 \_\_\_\_\_ % Error

#### Equipment checklist to be completed by Observer (Y or N)

SCCA Burgee \_\_\_\_\_ YC Burgee \_\_\_\_\_ All clocks covered ? \_\_\_\_\_  
 Depth Sounder \_\_\_\_\_ VHF Radio \_\_\_\_\_ Chartplotter used? \_\_\_\_\_  
 GPS Used ? \_\_\_\_\_ If GPS used, are all the prohibited items on the GPS taped over? \_\_\_\_\_

Observer is to record all unusual occurrences, rule violations, etc., on reverse side.

I have read the current SCCA rules and certify that I have abided by them.

Observer \_\_\_\_\_ Date \_\_\_\_\_

I have participated in this rally in the true spirit of yachtsmanship and have abided by all rules of the SCCA.

Skipper \_\_\_\_\_ Date \_\_\_\_\_

(SCCA Log Form revised 04/08/2021)

# **RESERVATIONS**

## **SEASON CLOSER 2025**

Predicted Log / Cruiser Navigation Contest

Saturday; October 11, 2025

Name: \_\_\_\_\_

Boat name: \_\_\_\_\_ Number of Dinners: \_\_\_\_\_

Cellphone # \_\_\_\_\_ E-mail address \_\_\_\_\_

Awards dinner on Saturday, October 11. Cocktails at 1800; Dinner at 1830.

Dinner will be at the Long Beach Yacht Club in the Library – Order off of the menu.

Yacht Club Casual Dress

\_\_\_\_\_

Please include above information and e-mail reservation to Bill McCormick at [seament4@aol.com](mailto:seament4@aol.com) no later than Thursday, October 9.

A limited number of slips will be available for those wishing to come to HHYC by boat. If slip is requested, please contact Bill McCormick directly at 626-375-42011. For dock space at LBYC, contact them directly at 562-598-9401.

**Dinner reservations are needed by Thursday afternoon, October 9**